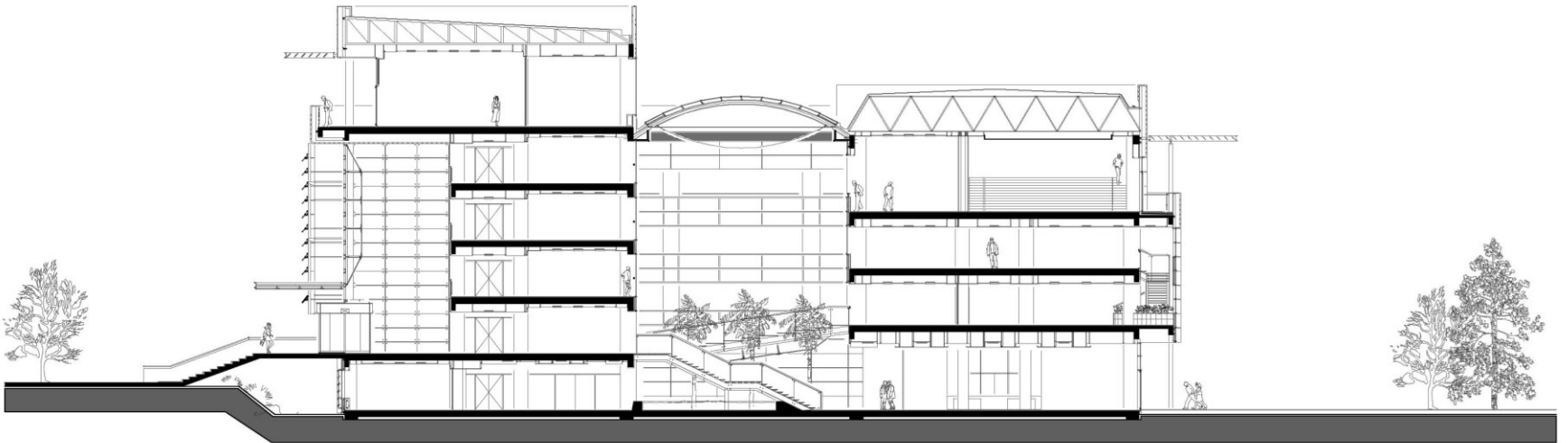




TOBB University of Economics and Technology



About TOBB ETÜ



TOBB ETÜ,

- Founded by the Education and Culture Foundation of the Chambers and Commodity Exchanges of Turkey (TOBEV),
- With the support of the Union of Chambers and Commodity Exchanges of Turkey (TOBB),
- Established in 2003 and started education and training in 2004 in Ankara, Turkey.



History

2001

Official establishment of TOBEV, the founder of TOBB ETÜ

2002

TOBEV's decision to establish TOBB ETÜ

2003

The Grand National Assembly's passing of the Law on TOBB ETÜ's establishment

2004

Admission of the first students, with 3 faculties and 6 departments

2009

-Opening of the Foreign Languages Building
-Establishment of the Faculty of Law

2008

TOBB ETÜ's first graduation ceremony

2007

Establishment of the Faculty of Architecture & Design

2006

TOBB ETÜ began its first Co-op term with 149 students

2005

Admission of the first postgraduate students

2010

Opening of TOBB ETÜ Student Guesthouse

2013

-Establishment of the Faculty of Medicine
-Opening of TOBB ETÜ Technology Center

2014

Opening of the Morphology Laboratory of the Faculty of Medicine

2016

TOBB ETÜ Private Hospital's association with TOBB ETÜ

TOBB ETÜ from 2004 to 2019



2004	2020
270 Students	5.594 Students
0 Alumni	7.916 Alumni
35 Teaching Staff	308 Teaching Staff
17 Tennure Track	228 Tennure Track
3 Faculties	6 Faculties 3 Institutes
6 Depart.	22 Dept.

Faculties and Student

Faculty of Engineering: **1.799**

Faculty of Econ. and Administ. Sciences: **641**

Faculty of Architecture and Design: **352**

Faculty of Science and Literature: **321**

Faculty of Law: **359**

Faculty of Medicine: **218**



Department of Foreign Languages: **853**

Institutes and Student

Doctorate (10 Progr.)

Master's Degree (21 Progr.)

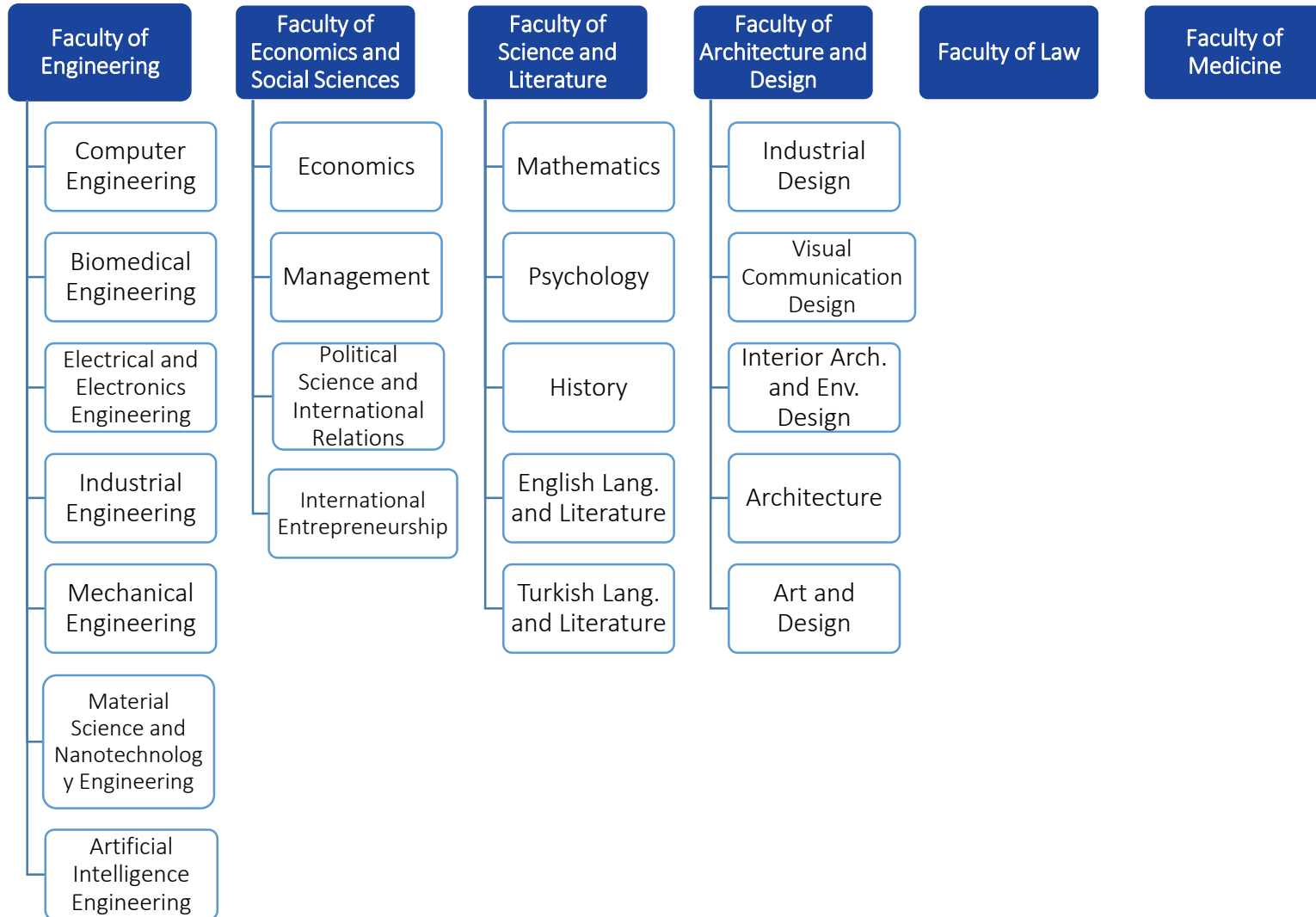
Grad Sch. of Engineering and Science
Master's: 310
Doct.: 100

Grad. Sch. of Economics and Social Sci.
Master's: 210
Doct.: 12

Grad. Sch. of Health Sci.
Master's: 1
Doct.: 2

Programs

Undergraduate Programs



Programs

Postgraduate Programs

Graduate School of Engineering and Science

Master's and Doctorate Programs

- Electrical and Electronics Engineering
- Computer Engineering
- Biomedical Engineering
- Industrial Engineering
- Mechanical Engineering
- Micro -Nanotechnology Engineering
- Mathematics

Master's Programs

- Architecture
- Cybersecurity

Graduate School of Economics and Social Sciences

Master's Programs

- Economics
- Management
- International Relations
- Turkish Lang. and Literature
- Design Studies
- Security Studies
- Migration Studies
- Public Law
- Private Law
- History
- Applied Economics and Finance
- Clinical Psychology

Doctorate Programs

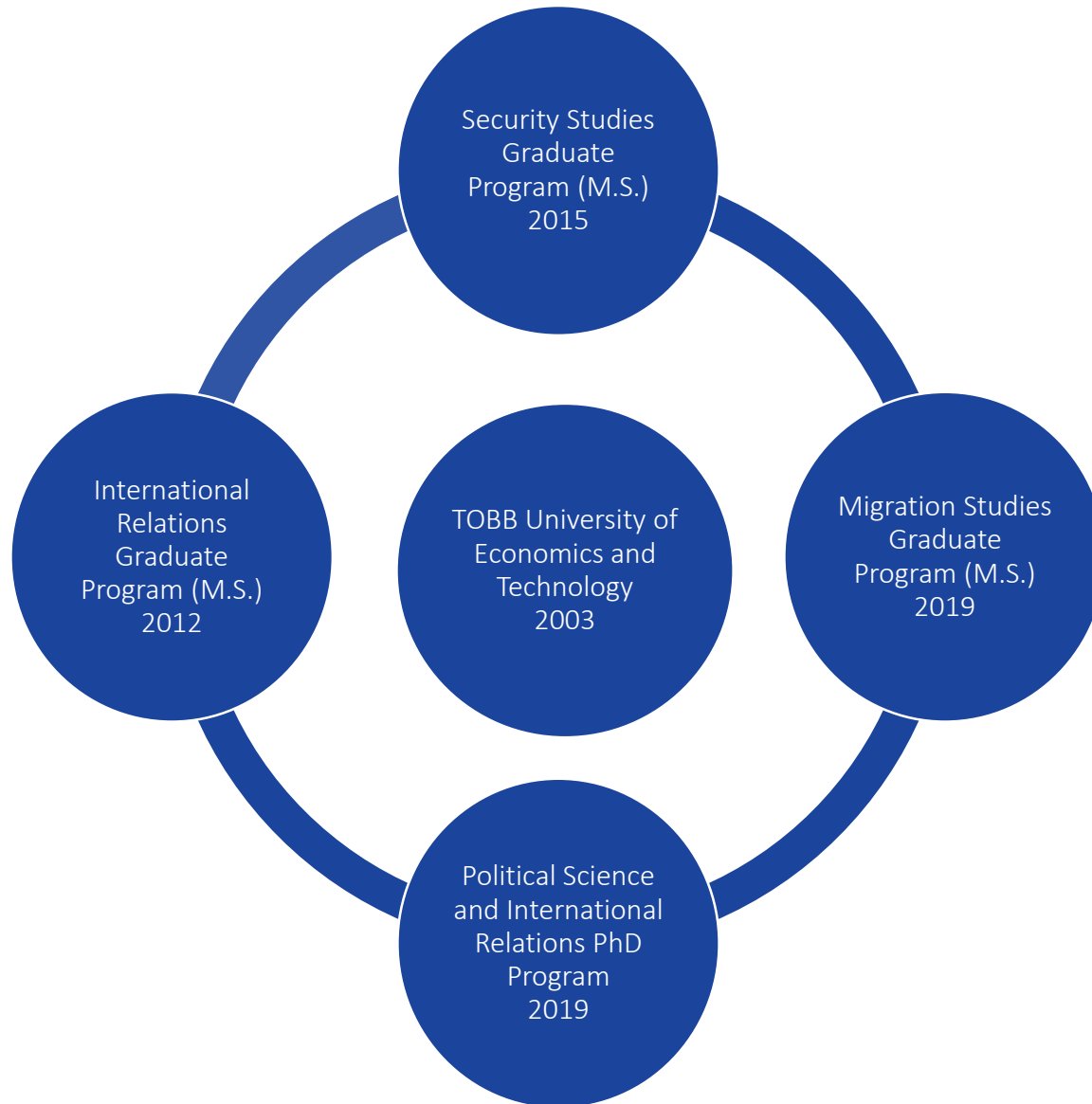
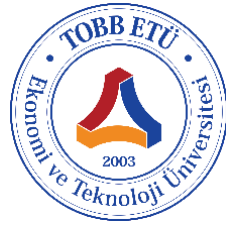
- Political Science and International Rel.
- Economics

Master's and Doctorate Programs

- Molecular Sciences

Graduate School of Medical Sciences

Masters and PhD Programs



Political Science and International Relations PhD Program



Part I: General Information and Description of the Program

Part II: The List of Compulsory and Elective Courses Offered in the Program

Part III: Academic Staff Offering Courses in the Program

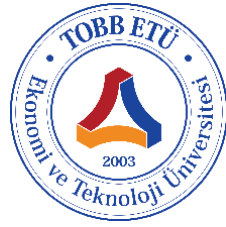
Part IV: Scholarships Offered in the Program

Part V: Tuition Fees for Graduate Programs



Part I: General Information and Description of the Program

- Launched in 2019, the PhD Program in Political Science and International Relations aims to guide students in doing advanced research and pursuing an academic career.
- The Program is designed to provide students the means to become an academic capable of analyzing political and economic issues at domestic and international levels and effectively using theoretical and methodological knowledge to uniquely contribute to academic literature.
- Accordingly, students will find a curriculum that will enable them to gain the necessary theoretical and methodological knowledge and skills. Our goal is to enable students who graduate from this Program to become researchers and professors at reputable academic institutions in Turkey and around the world.



- The PhD Program is offered in English: English is the medium of instruction and the required language for dissertations. This will facilitate the Program graduates to develop the skills needed to teach at various universities and participate in academic activities around the world as well as making their dissertations accessible to the scientific community outside Turkey.

Part II: The List of Compulsory and Elective Courses Offered in the Program

WITH
DISSERTATION
ONLY

- The total number of credits required to be taken for a PhD Degree: 21, ECTS: 63 + 8 + 170 =241
- Number of must courses to be taken: 3 Courses
- Number of elective courses to be taken: 4 Courses

**MUST
COURSES**

SUI 601 – Qualitative Research Methods

**SUI 603 – Contemporary Debates in Political Science and
International Relations**

SUI 602 – Quantitative Research Methods

SUI 690 – Seminar

An orange circle containing the text 'ELECTIVE COURSES' in white, bold, uppercase letters.

**ELECTIVE
COURSES**

SUI 611 – Comparative Political Behavior

SUI 612 – Advanced Readings on Ottoman Diplomacy

SUI 613 –Advanced Readings on Turkish Foreign Policy

SUI 621 – Population, Identity, Territory

SUI 622 – Empirical Method

SUI 623 – Politics of Migration

SUI 631 – Civil Forces and Global Politics

SUI 632 – Regional Policies of Russia

SUI 633 – State, Society and International Relations in the Modern Middle East

SUI 641 – Social Movements in the Middle East: Readings on Arab Spring)

SUI 642 – State, Sovereignty and Conflict

SUI 643 – State, Society and Politics in Modern Iran

SUI 651 – Globalisation and Political Economy of Development)

SUI 652 – Representation and Reproduction of Reality

SUI 653 – Readings on Gramsci

SUI 661 – Current Debates on Nationalism

SUI 662 – Political Psychology

SUI 666 – Political Theory

SUI 671 – Survey Techniques and Analysis

SUI 672 – Sociology of Globalisation

SUI 673 – International Security

Part III: Academic Staff Offering Courses in the Program

Faculty Member	Academic Title	Department
M. Tuğrul Arat	Prof. Dr.	Political Science and International Relations
İhsan Sezal	Prof. Dr.	Political Science and International Relations
Haldun Yalçınkaya	Prof. Dr.	Political Science and International Relations
Şaban Kardeş	Prof. Dr.	Political Science and International Relations
Nihat Ali Özcan	Assoc. Prof.	Political Science and International Relations
Pınar İpek	Assoc. Prof.	Political Science and International Relations
Fuat Dünder	Assoc. Prof.	Political Science and International Relations
Mustafa Serdar Palabıyık	Assoc. Prof.	Political Science and International Relations
Hakan Övünç Ongur	Assoc. Prof.	Political Science and International Relations
Başak Yavçan	Assoc. Prof.	Political Science and International Relations
Burak Bilgehan Özpek	Assoc. Prof.	Political Science and International Relations
Bahadır Pehlivan Türk	Assist. Prof.	Political Science and International Relations
Zeynep Dağı	Assist. Prof.	Political Science and International Relations
Kadir Aydın Gündüz	Assist. Prof.	Political Science and International Relations
Gülriş Şen	Assist. Prof.	Political Science and International Relations



Prof. Dr. M. Tuğrul Arat



Prof. Dr. İhsan Sezal



Prof. Dr. Haldun Yalçinkaya



Assoc. Prof. Şaban Kardeş



Assoc. Prof. Dr. Nihat Ali Özcan



Assoc. Prof. Pınar İpek



Assoc. Prof. Fuat Dünder



Assoc. Prof. M.Serdar Palabıyık



Assoc. Prof H.Övünç Ongur

Assoc. Prof Başak Yavçan

Assoc. Prof B. Bilgehan Özpek

Assist. Prof. Zeynep Dağı



Assist. Prof. Bahadır Pehlivan Türk

Assist. Prof. K.Aydın Gündüz

Assist. Prof. Gülriz Şen

Part IV: Scholarships Offered in the Program

FULL SCHOLARSHIP

Scholarships offered to successful students who assist in departmental research and education activities within the Institute of Social Sciences

	Full Scholarship Amount
Master's Degree	₺ 2,400
PhD Students (Before-Qualifying Exam)	₺ 2,800
PhD Candidates (After-Qualifying Exam)	₺ 3,200

NOTE: Only students with full scholarship receive a monthly stipend [from TOBB ETÜ] while other scholarship types include tuition waiver only .

PROJECT-BASED SCHOLARSHIP

Offered to students working with a faculty member in projects supported by institutions outside the University

Other Scholarships Offered in the Program

TUITION WAIVER

Offered to successful candidates working at public institutions

PERSONNEL SCHOLARSHIP

Offered to TOBB ETU employees

TÜBİTAK BİDEB SCHOLARSHIP

**Offered to students found eligible for the BİDEB Scholarship by
TÜBİTAK**

**Part V:
2020-2021
Tuition
Fees For
Graduate
Programs**

Program	One Semester	Annual Fee
Migration Studies	6.600 ₺	19.800 ₺
Security Studies	6.600 ₺	19.800 ₺
Economics	4.950 ₺	14.850 ₺
MBA	9.900 ₺	29.700 ₺
Public Law	6.600 ₺	19.800 ₺
Private Law	6.600 ₺	19.800 ₺
International Relations	6.600 ₺	19.800 ₺
Applied Economics and Finance	6.600 ₺	19.800 ₺
History	3.380 ₺	10.140 ₺
Design	6.600 ₺	19.800 ₺
Turkish Language and Literature	3.300 ₺	9.900 ₺
Economics (PhD)	6.600 ₺	19.800 ₺
Political Science and International Relations (PhD)	6.600 ₺	19.800 ₺
Course Fee for Special Students in all Programs	2.970 ₺	



TOBB University of Economics and Technology

Department of Political Science and International Relations

<http://www.etu.edu.tr>



tobbetu_sui



tobbetu_sui

